



**A Once in a Generation Opportunity
to Protect the Forests of
Southern New South Wales**



A Once in a Generation Opportunity

The **Great Southern Forest** proposal would protect important **forests, wildlife, rivers, and cultural areas** that are deeply significant to Aboriginal communities.

The proposal would help the region cope with growing pressure from **climate change, development, severe bushfires** and the ongoing **loss of plants and animals**, helping nature recover and remain resilient into the future.

To make this happen, **native forest logging would end** in nearby State Forests. These forests would be added to existing national parks to **create one large, connected reserve** of almost **1.2 million hectares**.



Open forests for everyone to enjoy!

Protecting our forests would unlock a wealth of **new recreational opportunities** while enhancing existing activities such as **mountain biking, camping, fishing, horse riding, and bushwalking**. Furthermore, designating forest areas near townships as Regional Parks could broaden community access, allowing for a wider range of uses, including **dog walking**.

The proposal recognises the deep connection **First Nations** people have with these landscapes. It supports ongoing pathways to **work together** to care for Country, share knowledge and explore future **management opportunities**.

These forests would continue to **support local economies** by creating **jobs, business opportunities** and natural places for people to visit and enjoy.

THE GREAT SOUTHERN FOREST

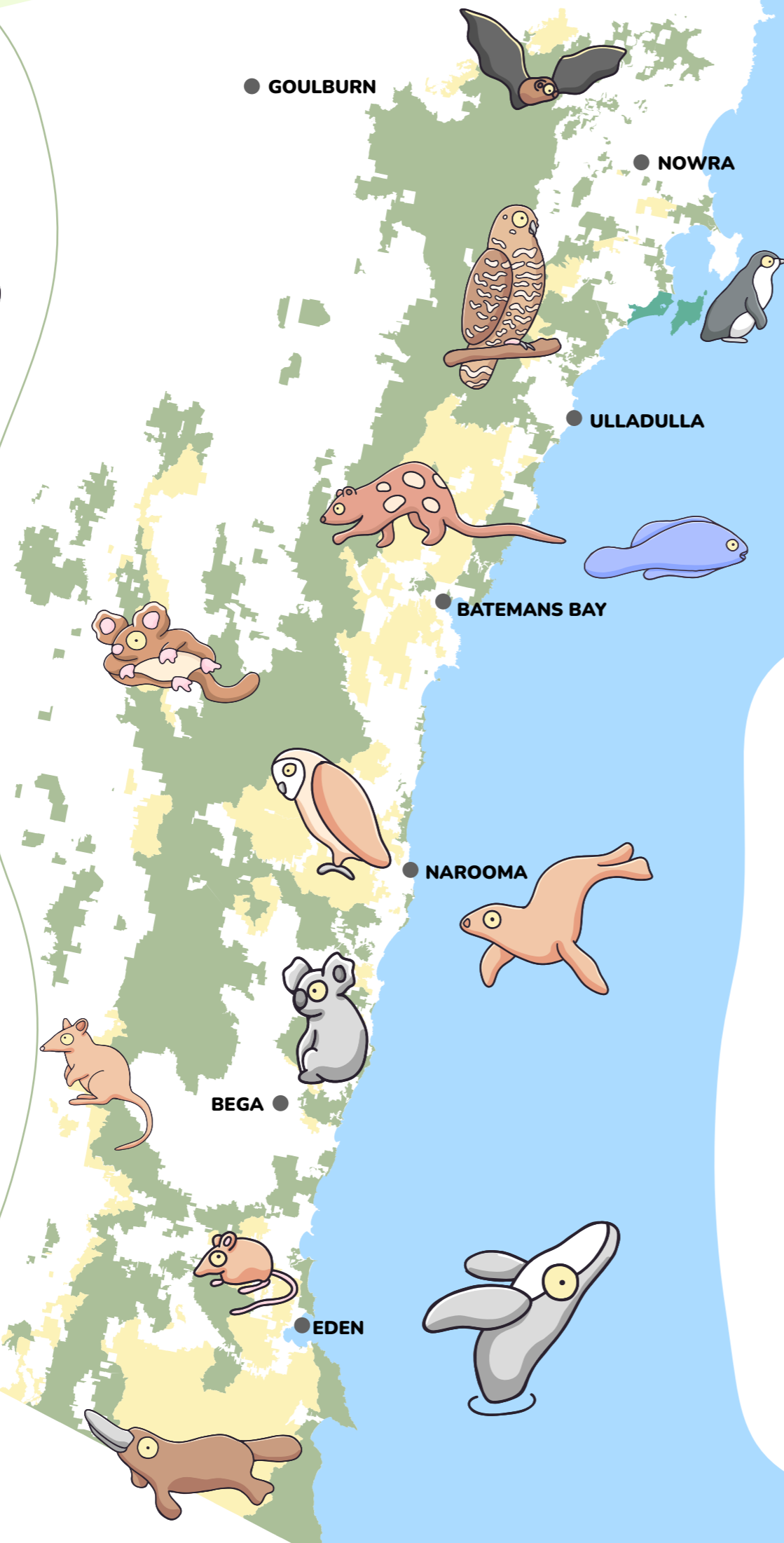


The Great Southern Forest proposal stretches across a **100 kilometre wide** corridor from the Illawarra region to the Victorian border.

It is made up of **55** State Forests, **24** Flora Reserves and **98** National Parks and Wildlife Service managed reserves.

No private land is included in the proposal.

-  **EXISTING PROTECTED AREAS**
-  **STATE FOREST**



Islands of Protection

Many of our favourite existing **national parks** and **protected areas** are like **islands in a sea**. This can stop wildlife from moving freely around large areas and is a leading cause of decline for many species, especially when a natural disaster like a bushfire hits.

Adding these **State Forests** to existing **protected areas** will create a **green highway** that lets **wildlife travel safely** from the Illawarra region all the way to Victoria.



Protect & Connect Your Patch

The **Great Southern Forest** is a **big vision**, but its real heart is found in the **smaller, local patches** that people love. All across the region, communities are stepping up to **look after the patches** of forest that matter most to them.

The Great Southern Forest proposal is the link that **joins these patches together**. It will create a **green highway for wildlife**, but it will also **connect our communities**. By linking all the local efforts, we can turn these **patches** into **one giant protected area**, while still keeping the unique character of each patch.

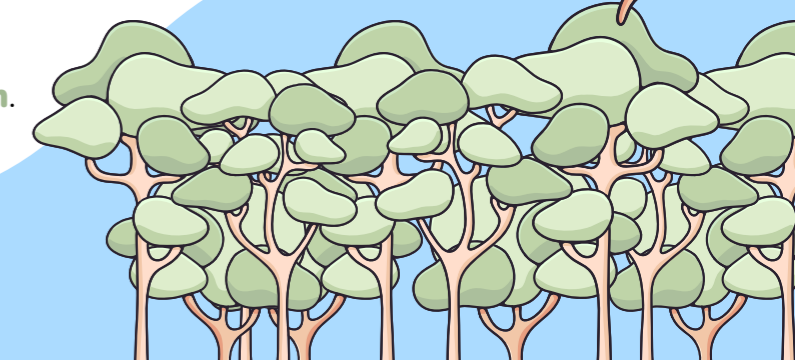
Is there a **patch** of forest that is **special to you**? Scan the **QR Code** to **add your story** alongside other special places both inside the Great Southern Forest and across the state. It's a way to show off the **places we love** and the local groups working together to **protect them**.



protect your patch



npansw.org.au/protect-your-patch

Securing a Resilient Future

Even though parts of the Southern Forests are already protected, many of our **most important habitats** are still in areas where logging is allowed. These forests are being cleared mainly for **woodchips**.

Right now, a mix of industrial logging, invasive pests, and climate impacts is causing **local wildlife** to **disappear**.

Logging destroys tree hollows, which are needed as homes for **174 different species**. It also releases stored carbon and makes **bushfires more dangerous**.

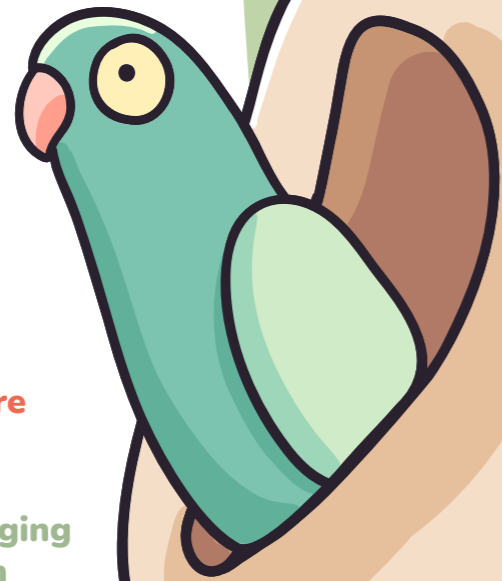
By **stopping native forest logging** and creating the **Great Southern Forest**, we can help nature recover.

Permanently protecting these forests would support **land management partnerships** between First Nations, government, and local communities. It will also help fight climate change and **create more jobs** in tourism and outdoor recreation.



Proof in the numbers

NSW National Parks had **65.5 million visitors** in 2024-25 and bring in well over **\$19 billion** to regional towns every year!



Our Most At-Risk Forests

PROTECTING RARE ECOSYSTEMS: State forests house over **10,000 hectares** of endangered habitat known as threatened ecological communities. These areas contain a variety of unique plants and animals which we risk losing forever if they are not given adequate protection.

WIDESPREAD CONSERVATION: The proposal covers **55 different state forests** that are currently subject to logging, many of which contain a high density of threatened species.

PRESERVING ANCIENT TREES: Our most ancient forests, known as old-growth, are vital for protecting wildlife, especially animals like gliders, parrots, and large forest owls that rely on tree hollows for homes. The Great Southern Forest would **protect** our **old-growth forests**, ensuring these ancient trees remain standing.



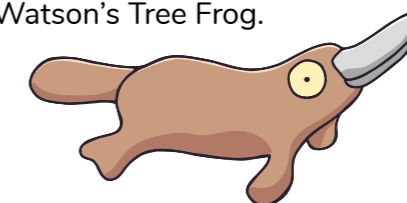
Protecting Threatened Species

HOTSPOTS FOR THREATENED PLANTS: The Great Southern Forest would protect a variety of plants and provide a lifeline for **12 unique species** found almost nowhere else on Earth. Without adequate protection, they could face extinction.

A SANCTUARY FOR THREATENED ANIMALS: These forests provide a vital safety net for a diverse range of wildlife, including critically endangered species like the Swift Parrot and Regent Honeyeater. By securing these habitats, the plan ensures that **61 at-risk animal species** have the space they need to survive.



FROM TREETOPS TO CREEKBEDS: The proposal would protect roughly **75% of the habitat** for Greater Gliders and Yellow-bellied Gliders and over **90% of known local locations** of Southern Brown Bandicoot, Spotted-tailed Quoll, Southern Long-nosed Potoroo, and White-footed Dunnart. This protection extends to the waterways, benefiting iconic species such as the Platypus and Watson's Tree Frog.





Copyright National Parks
Association of NSW Inc. 2026

Printed on 100% recycled paper

Find out more!

Scan the QR code to find out more
about the Great Southern Forest and
how we can protect it!



npansw.org.au/the-great-southern-forest